



DEVELOPER :
RAAMARAAJ REALTY LLP

SITE :
Raamah Shivaay, Nr. Raama Emperro, opp. Bhavans School
Akashvani Main Road, Manjalpur, Vadodara-390009.

M: +91 97371 11666 | 73773 61961
E : raamaraajrealty@gmail.com | W : www.raamah.in

ARCHITECT :



STRUCTURAL CONSULTANT:

A A Desai
(Ashutosh Desai)

MEPF CONSULTANT:

Jhaveri
Associates



SCAN QR
FOR LOCATION



SCAN QR
FOR WEBSITE



WE ARE ALSO ON SOCIAL    

1) No signboards will be allowed on outer elevation & incase of shops it will be allowed only at marked location. 2) Only internal changes shall be allowed & will be charged extra in advance. 3) Maintenance, MGVCL, VMSS, stamp duty, registration charges and other legal charges shall be borne extra by the purchaser. 4) Vat, service tax, & any other taxes and charges from govt or semi govt or local body when applicable shall be borne extra by the purchaser. 5) Default in payment leads to cancellation and refund will be made after deducting adm. exp of Rs. 25000/- after 30 days from new booking. 6) Project completion time may vary as it is highly dependant on labor & material availability and approvals from various authorities. 7) Right of terraces and balance or additional FSI and future construction remains with land lord only. Customer/member or developer shall not claim any right for the same.

RERA NO.: PR/GJ/VADODARA/VADODARA/Others/00000000/000000
W. : www.gujrera.gujarat.gov.in



Inspired by the one who is
THE BEGINNING | THE END | THE ETERNAL



Welcome to Raamah Shivaay
Spaces inspired by the divine power

Raamah Group is a real estate enterprise committed to building aspirations and delivering value. In the last few decades, we have developed prime residential real estate in Vadodara. By Launching Raamah Shivaay we take the pride and pleasure of announcing a ultra-luxurious series of Raamah Group.

Raamah Shivay is where you experience positive vibes amid the goodness of nature and a Lord Shiva temple within the campus. Homes that have been designed in a way that you are peace with yourself and enjoy the privilege of living in ultra-luxurious spaces.

A project from the reputable Raamah Group, Raamah Shivay is all set to become the landmark of the fast-developing Manjalpur, Vadodara.

Sursagar Lake

A landmark of Vadodara, the Sursagar Lake, formerly known as Chandan Talao is located in the middle of Vadodara and remains one of the most favourite destinations of the city. Built with stone masonry in 18th century, the water in Sursagar Lake remains at the same level round the year and the key highlight of this lake is a mammoth 120 feet tall statue of Lord Shiva, which is a sight to behold.



TRIDENT
Means staying above all three states of waking, dreaming, and sleeping.



THIRD EYE
Means living a life of alertness, knowledge, and wisdom all the time.



DRUM
Means that the universe is always expanding and creating new rhythm.



VIBES OF DIVINITY

Homes that blend trends
with traditions.



VIBES OF SERENITY

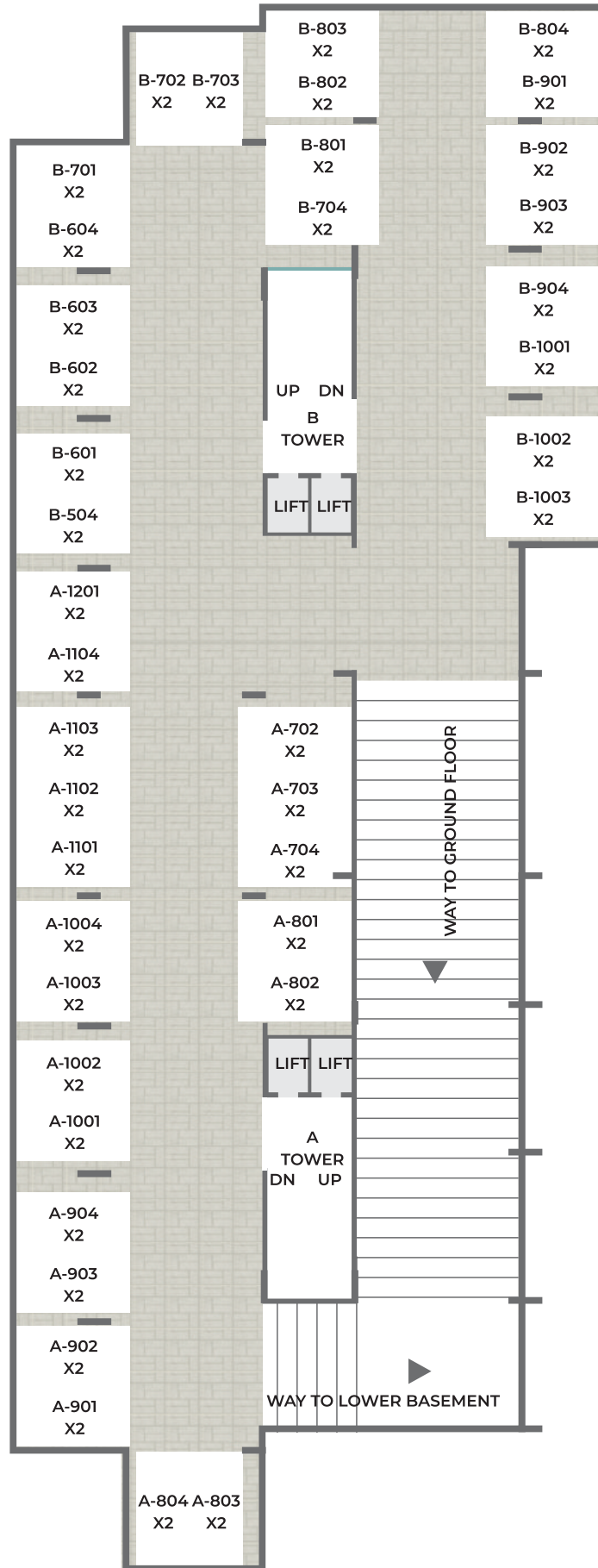
Homes that blend elegance
with peace of mind.

VIBES OF LUXURY

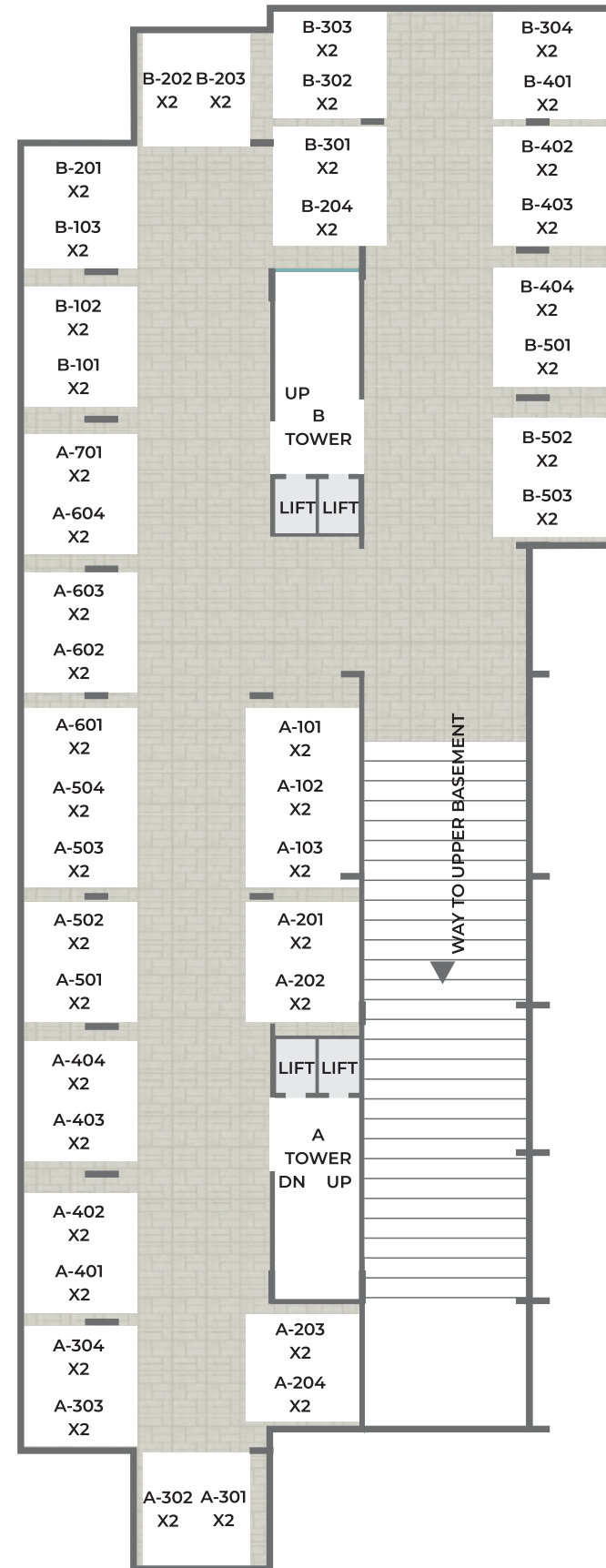




BASEMENT FLOOR PLAN



UPPER BASEMENT PLAN



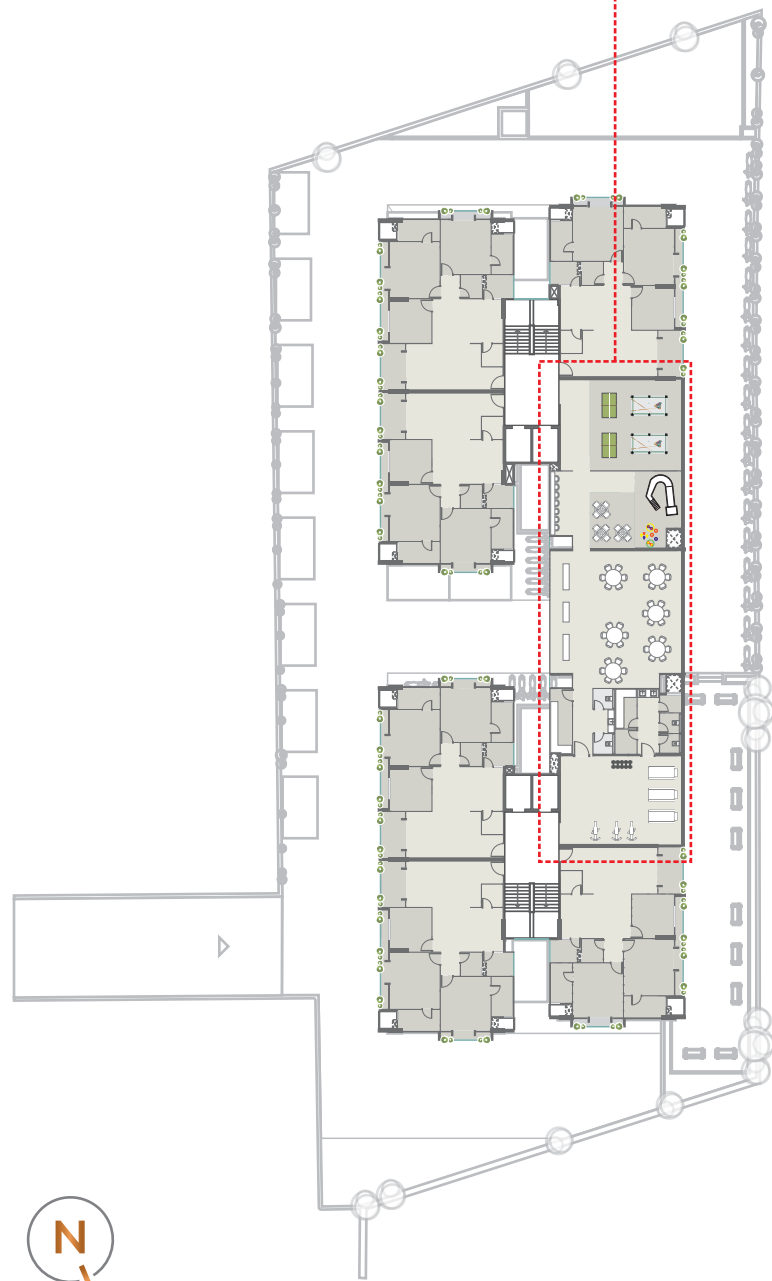
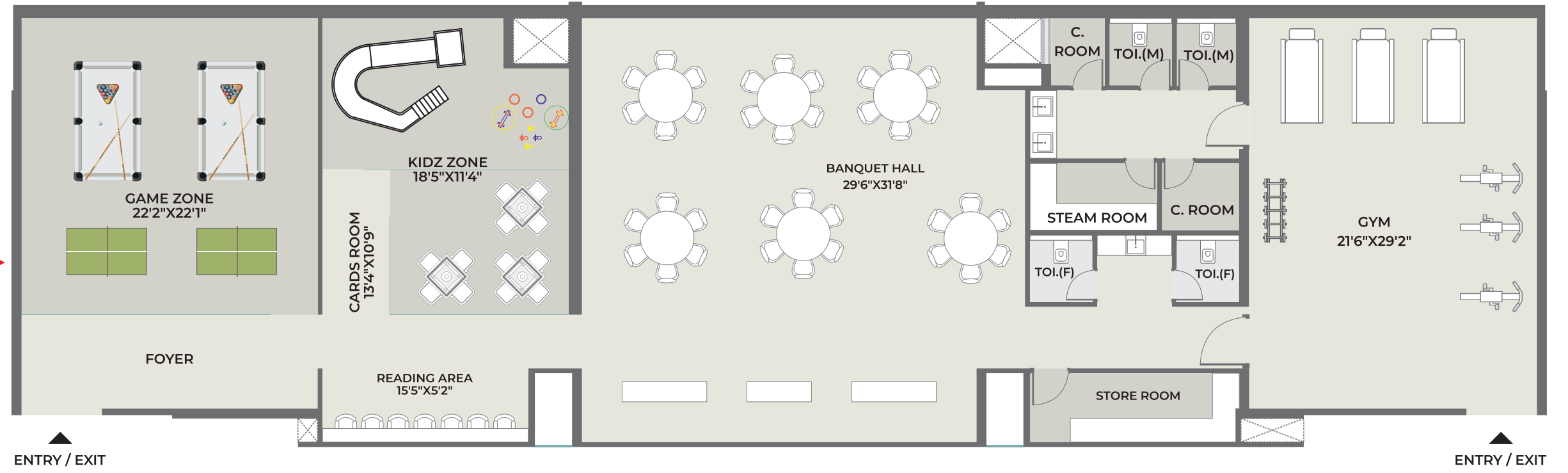
LOWER BASEMENT PLAN



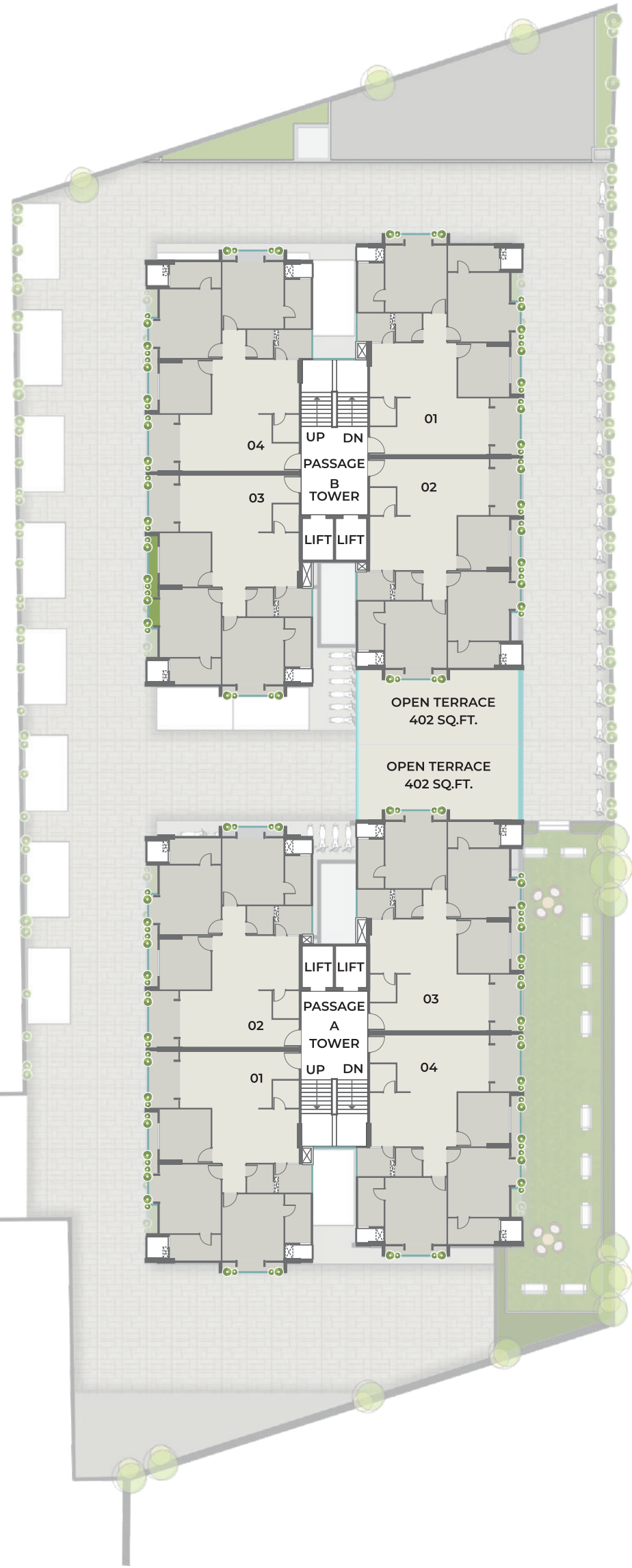
GROUND FLOOR PLAN




CLUB HOUSE
FLOOR PLAN




SECOND
FLOOR PLAN




TYPICAL
FLOOR PLAN
3RD to 14TH



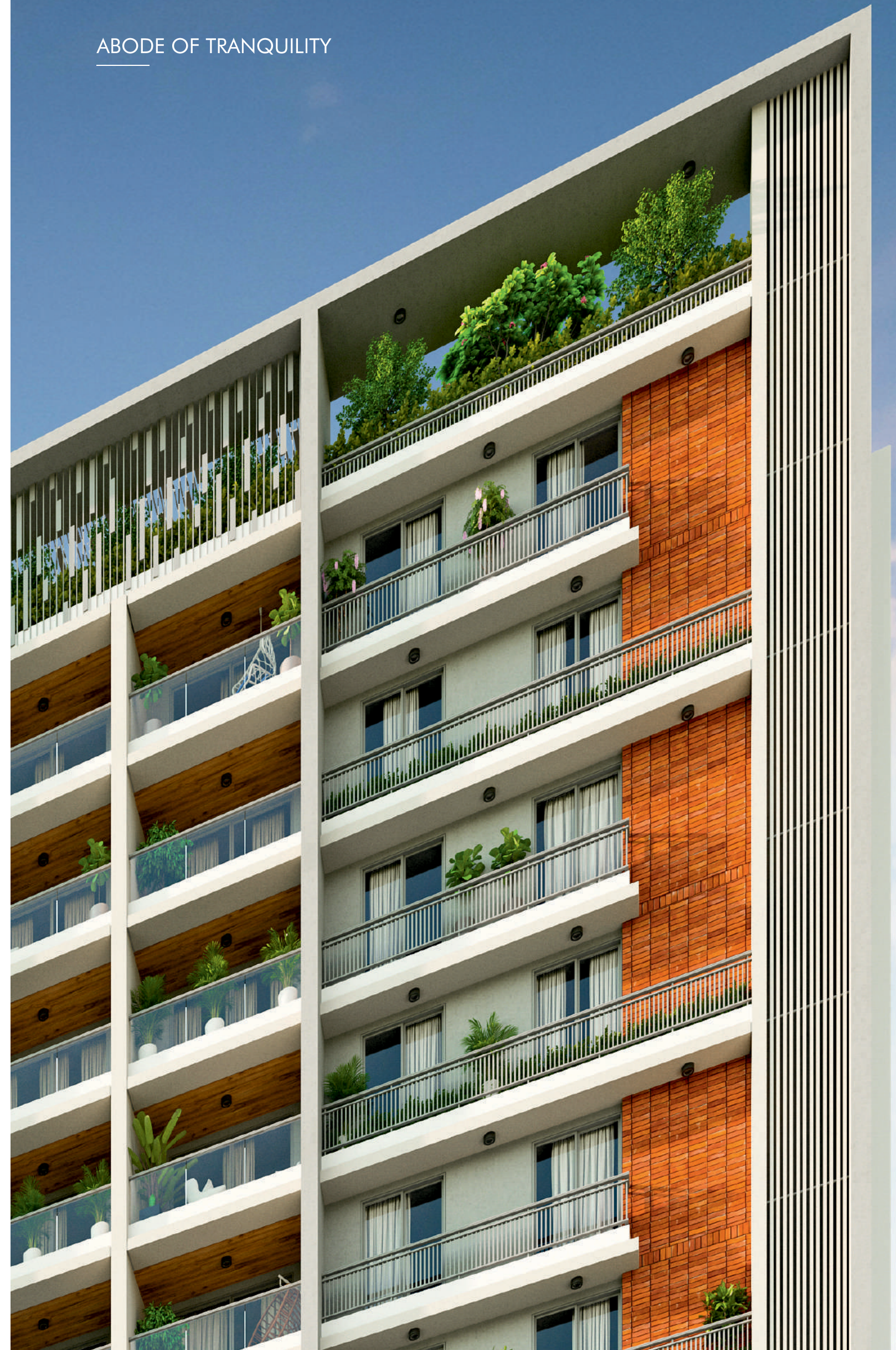


TYPICAL
FLOOR PLAN



Carpet Area	: 1062.00 sq.ft
Wash / Balcony	: 76.00 sq.ft
Total Carpet Area	: 1138.00 sq.ft
S.B.A	: 2035.00 sq.ft

ABODE OF TRANQUILITY



SHIV TEMPLE



CHILDREN PLAY AREA





AMENITIES



FOYER



TERRACE GAZEBO

• Club House with all modern facility

• Children Play Area

• Well equipped gymnasium

• Lush Green Landscape Garden

• Allotted Two car parking each flat

• Entrance Gate

• 24x7 Security with Security Cabin

• Fire Safety with Equipments

• Cordless Intercom Facility

• C.C.T.V. camera

• Terrace Gazebo.

• Automatic standard elevator

• Kids Zone

• Indoor Game Room

• Banquet Hall

• WI - FI connectivity @ Common Areas

• Power backup for common areas & Utility.



GARDEN AREA



SPECIFICATION

STRUCTURE

Well Designed RCC framed earthquake resistant structure.

FINISHING

Internal smooth finish plaster with putty & primer on internal walls. External double coat plaster with texture paint.

WINDOWS

Aluminum section with safety grill.

BATHROOMS

Designer wall tiles and anti skid ceramic tiles flooring. Standard quality CP fittings & vessels. Granite counter with ceramic basin. Powder Coated / Anodized aluminous ventilation.

FLOORING

Vitrified tile 800mmx800mm / 1200mmx600.

DOORS

Veneer or laminated flush doors as per architect design.

KITCHEN






Exclusive granite platform with kitchen sink. Designer tiles upto 4ft over the platform with provision of exhaust fan. Ceramic tiles dado and kotastone flooring for wash area.

ELECTRIFICATION

Concealed copper ISI wiring & branded modular switches. Sufficient electrical points in kitchen & all the rooms. TV & telephone points in living room & master bedroom. Decorative common lighting in foyer, parking, garden, club house & on internal road.

WATER FACILITY

Municipal Water Supply through underground water tank & borewell backup with censor panels.

-  Hospital 2 min.
-  Temple In Campus.
-  School 1 min.
-  Super Market 1 min.
-  Raamah Shivaay



Raamah शिवाय



PAYMENT MODES:

- On Booking **10%** | At The Time Of Execution Of Agreement **30%**
- Plinth of Building / Tower **45%** | Completion Of Slab **70%**
- Completion Of wall, Plaster, Floor, Door & Window **75%**
- Completion Of Sanitary Fittings, Staircase, Lift Well, Lobbies **80%**
- Completion Of External Plumbing & Plaster, Elevation, Terrace with Water Proofing **85%**
- Completion Of Lift, Water Pumps, Electric Fittings **90%** | At the time of Possession **100%**

ABOUT Raamah

RAAMAH Group began its foray into real estate and infrastructure development in early 2004 with the aim of participating in the creation of urban for a developing India. RAAMA Group specializes in real estate development. RAAMA with its group companies creates spaces in terms of Luxurious Flats, Infrastructure Ready Residential Plots, Commercial complex,

RAAMAH GROUP is one of fastest growing infrastructure development company and develops residential and commercial projects in the state of Gujarat. It is fully integrated and geared to design, build and operate within the required time frame with comprehensive solution as a single point provider. It aims to deliver world class construction services. It Continuing our legacy of innovation and achieve new opportunity with every

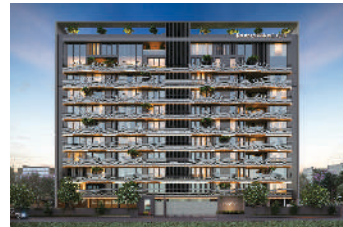
Ongoing Projects

RAAMA
even



@ GOTRI

RAAMA
PALACIO-II



@ NEW ALKAPURI

RAAMA
EMPERRO
PREMIUM BUSINESS SPACE



@ MANJALPUR

RAAMA
SKYZ



@ SAMA - SAVLI ROAD

NIRVAANTA
THE BESPOKE VILLA



@ SEVASI

RAAMA
eldoraa45



@ AMPAD

Completed Projects

RAAMA
ICON



@ GOTRI - SEVASI MAIN RD

RAAMA
shikhar



@ SAMA - SAVLI ROAD

RAAMA
PALACIO
THE SOBERGHO APARTMENTS



@ GOTRI

RAAMA
EMPORIO



@ GOTRI - SEVASI MAIN RD

RAAMA
CREST



@ SUNPHARMA ROAD

RAAMA
ELINA



@ GOTRI

RAAMA
eternia



@ SAMA - SAVLI ROAD

Raamah
BUSSINESS BAY

EXCLUSIVE
OFFICES TOWER
@ SEVASI

Raamah
SPECTRAA

COMMERCIAL
& RESIDENTIAL
@ ALKAPURI

Upcoming Projects

Raamah
360°

EXCLUSIVE
5 BHK APARTMENTS
@ NEW ALKAPURI

Raamah
Elicia

EXCLUSIVE
4 BHK APARTMENTS
@ BHAYLI